

Knee Peroneal Neurogram

- 8-16 Channel Knee Coil, Medium/Lg Wrap, or Medium Air coil
- 1. 3 Pl loc
- 2. Ax T1
- 3. Ax T2 FAT
- 4. 3d Sag Mensa Flip 35 –angle to condyles, full R/L Coverage (SHIM)
- 5. 3d Ax Mensa Flip 35 (SHIM)
- 6. Limited Obl Sag T2 IDEAL (see images for coverage/angle)
- 7. Sag PD Fat
- OPT: Ax STIR if Fat Sat issues on Ax T2 FAT
- Contrast only if tumor or infection related---
- 8. Ax T1 FAT

Request: MR Knee w/o or MR Knee w/w

For 750 Scanners (SMC4, EMH2 and HERI) use the CV Type in for each Mensa (instructions below)—other scanners have been updated to MENSA NERVE, which automatically separates Echos and has DL₂

Calf Proximal Peroneal Neurogram

- 8-16 Channel Knee Coil, Medium/Lg Wrap, or Medium Air coil
- 1. 3 Pl loc
- 2. Ax T1
- 3. Ax T2 FAT
- 4. 3d Sag Mensa Flip 35 –midline down shaft of tibia , full R/L Coverage (SHIM)
- 5. 3d Ax Mensa Flip 35 (SHIM)
- 6. Limited Obl Sag T2 IDEAL (see images for coverage/angle)
- 7. Sag PD Fat
- OPT: Ax STIR if Fat Sat issues on Ax T2 FAT
- Contrast only if tumor or infection related---
- 8. Ax T1 FAT

Request: Request: MR Knee w/o or MR Knee w/w

For 750 Scanners (SMC4, EMH2 and HERI) use the CV Type in for each Mensa (instructions below)—other scanners have been updated to MENSA NERVE, which automatically separates Echos and has DL

Calf Tibial Neurogram

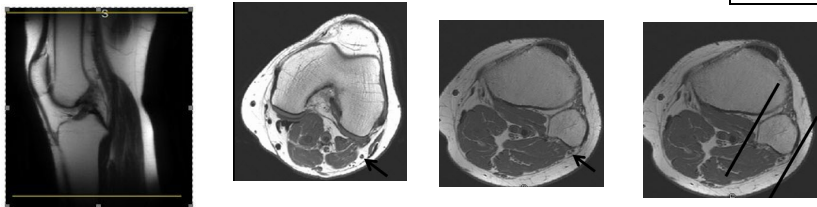
- 8-16 Channel Knee Coil, Medium/Lg Wrap, or Medium Air coil
- 1. 3 Pl loc
- 2. Ax T1
- 3. Ax T2 FAT
- 4. 3d Sag Mensa Flip 35 –Midline down shaft of Tibia, full R/L Coverage (SHIM)
- 5. 3d Ax Mensa Flip 35 (SHIM)
- 6. Limited Obl Sag T2 IDEAL (see images for coverage/angle)
- 7. Sag PD Fat
- OPT: Ax STIR if Fat Sat issues on Ax T2 FAT
- Contrast only if tumor or infection related---
- 8. Ax T1 FAT

Request: Request: MR Knee w/o or MR Knee w/w

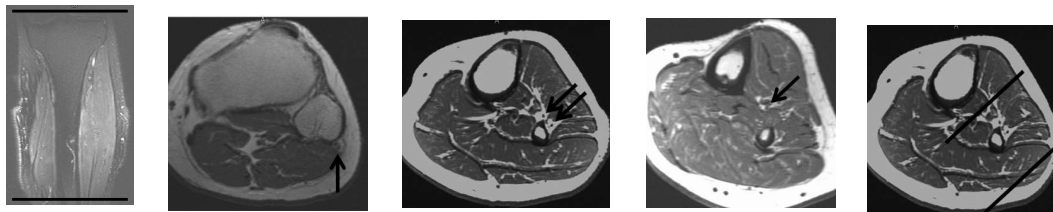
For 750 Scanners (SMC4, EMH2 and HERI) use the CV Type in for each Mensa (instructions below)—other scanners have been updated to MENSA NERVE, which automatically separates Echos and has DL

Tip: If using MP Air coil ensure table elements are off
 OPTIONAL Contrast: Vueway 0.05mmol/kg Max 10

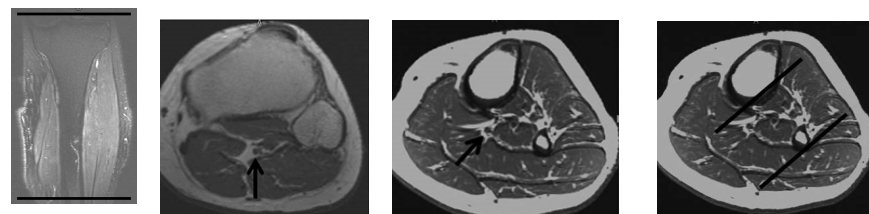
Knee peroneal Coverage/Images:



Calf Proximal Peroneal Coverage/Images:



Calf Tibial Neurogram Coverage/Images:



Thigh Neurogram

- Large Air Coil (wrapped around leg or using posterior elements) or Torso Array
- Scan from Acetabulum through Distal Femur**
- 1. 3 Pl loc
- 2. Ax T1 Proximal
- 3. Ax T2 FAT Proximal (SHIM)
- 4. Ax T1 Distal
- 5. Ax T2 FAT Distal (SHIM)
- 6. 3d Sag Mensa Flip 35—midline down shaft of femur (SHIM)
- 7. 3d Ax Mensa Flip 35 Proximal (SHIM)
- 8. #d Ax Mensa Flip 35 Distal (SHIM)
- OPT: Ax STIR if Fat Sat issues on Ax T2 FAT
- Contrast only if tumor or infection related---
- 9. Ax T1 FAT Proximal (SHIM)
- 10. Ax T1 FAT Distal (SHIM)

Request: MRI Thigh w/o contrast or MRI Thigh w/w

For 750 Scanners (SMC4, EMH2 and HERI) use the CV Type in for each Mensa (instructions below)—other scanners have been updated to MENSA NERVE, which automatically separates Echos and has DL

Entire Calf Neurogram

- Air Coil (wrapped around leg or using posterior elements) or Torso Array
- 1. 3 Pl loc
- 2. Ax T1 Proximal
- 3. Ax T2 FAT Proximal (SHIM)
- 4. Ax T1 Distal
- 5. Ax T2 FAT Distal (SHIM)
- 6. 3d Sag Mensa Flip 35—midline down shaft of Tibia (SHIM)
- 7. 3d Ax Mensa Flip 35 Proximal (SHIM)
- 8. #d Ax Mensa Flip 35 Distal (SHIM)
- OPT: Ax STIR if Fat Sat issues on Ax T2 FAT
- Contrast only if tumor or infection related---
- 9. Ax T1 FAT Proximal (SHIM)
- 10. Ax T1 FAT Distal (SHIM)

Request: MRI Calf w/o contrast or MRI Calf w/w

For 750 Scanners (SMC4, EMH2 and HERI) use the CV Type in for each Mensa (instructions below)—other scanners have been updated to MENSA NERVE, which automatically separates Echos and has DL

Ankle Neurogram

- Ensure Foot is in Flexion, dedicated foot coil should be used—If ordered with Calf and on a system with an air coil, use large air coil with foot holder to prevent having to switch coils, Ensure Ankle is in Flexion. Do not use torso coil on 750 for ankle imaging
- 1. 3 Pl loc
- 2. Ax T1 Ankle
- 3. Ax T2 FAT Ankle
- 4. SA T2 FLEX Forefoot
- 5. 3d Cor Mensa Flip 35 – Straight (SHIM) Ankle
- 6. 3d Ax Mensa Flip 35 (SHIM) Ankle
- 7. 3d SA Mensa Flip 35 (SHIM) Forefoot
- 8. Cor T1 Ankle
- 9. Cor T2 FAT Ankle
- OPT: Ax STIR if Fat Sat issues on Ax T2 FAT
- Contrast only if tumor or infection related---
- Call to check pre contrast images to determine post planes
- 10. Ax T1 FAT 11. Cor T1 FAT 12. SA T1 FLEX

Request: MRI Ankle w/o contrast or MRI Ankle w/w

For 750 Scanners (SMC4, EMH2 and HERI) use the CV Type in for each Mensa (instructions below)—other scanners have been updated to MENSA NERVE, which automatically separates Echos and has DL

750 scanners use type in for Mensa sequences: select carrot by "Scan" button ---> Download select carrot by "Scan" button ---> Display CV's type in "rhfiesta" and hit enter
 Current Value = 0
 This separates the echo. Two sequences show up in PACS