

Pitfalls in the Human Visual System

Pitfalls in the Human Visual System *Can we trust our eyes?*

Radiologists are Experts in Perception

- Introduction
- Parallel Lines
- Orientation is Important
- Shapes that aren't there
- Motion that's not there
- Smooth Motion
- Perspective
- Colors ①
- Length

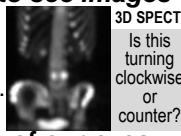
Eyes are tools we use to see images

- It's not sufficient just to see the image with our eyes...
- We need our brains to interpret what our eyes see.

Like any tool, we need to know the limitations of our eyes

- What are the "pitfalls" between the way our eyes see and our brain interprets?

Can we trust our eyes?



Pitfalls in the Human Visual System *Can we trust our eyes?*

Parallel Lines

- Introduction
- Parallel Lines
- Orientation is Important
- Shapes that aren't there
- Motion that's not there
- Smooth Motion
- Perspective
- Colors ①
- Length

Seeing parallel articular surfaces is an important concept in joint imaging

Parallelism = Anatomic **Lack of Parallelism = Dislocation**

Pitfalls in the Human Visual System *Can we trust our eyes?*

Parallel Lines

- Introduction
- Parallel Lines
- Orientation is Important
- Shapes that aren't there
- Motion that's not there
- Smooth Motion
- Perspective
- Colors ①
- Length

It's easy to see these 2 lines are parallel

But if we add diagonal lines, they no longer appear parallel

Pitfalls in the Human Visual System *Can we trust our eyes?*

Café Wall Illusion

- Introduction
- Parallel Lines
- Orientation is Important
- Shapes that aren't there
- Motion that's not there
- Smooth Motion
- Perspective
- Colors ①
- Length

Straight rows of black/white bricks that don't appear straight

Pitfalls in the Human Visual System *Can we trust our eyes?*

Café Wall Illusion

- Introduction
- Parallel Lines
- Orientation is Important
- Shapes that aren't there
- Motion that's not there
- Smooth Motion
- Perspective
- Colors ①
- Length



Pitfalls in the Human Visual System *Can we trust our eyes?*

Café Wall Illusion

- Introduction
- Parallel Lines
- Orientation is Important
- Shapes that aren't there
- Motion that's not there
- Smooth Motion
- Perspective
- Colors ①
- Length



Pitfalls in the Human Visual System

Pitfalls in the Human Visual System *Can we trust our eyes?*

Café Wall Illusion

Introduction

- Parallel Lines
- Orientation is Important
- Shapes that aren't there
- Motion that's not there
- Smooth Motion
- Perspective
- Colors
- Length



www.schreibman.info © 2015 Ken L. Schreibman, PhD/MD

[youtube.com](https://www.youtube.com/watch?v=...) "10 optical illusions in 2 minutes"

7 of 42

Pitfalls in the Human Visual System

Café Wall Illusion

Introduction

- Parallel Lines
- Orientation is Important
- Shapes that aren't there
- Motion that's not there
- Smooth Motion
- Perspective
- Colors
- Length



www.schreibman.info © 2015 Ken L. Schreibman, PhD/MD

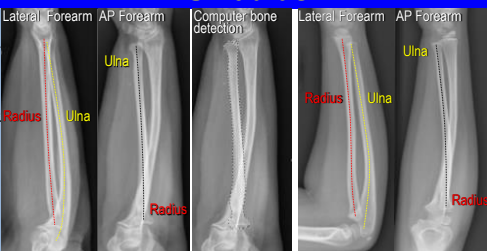
2007 ARRS, Universal Studios, Orlando... Men In Black bathroom floor

Pitfalls in the Human Visual System *Can we trust our eyes?*

"Ulnadius"

Introduction

- Parallel Lines
- Orientation is Important
- Shapes that aren't there
- Motion that's not there
- Smooth Motion
- Perspective
- Colors
- Length



www.schreibman.info © 2015 Ken L. Schreibman, PhD/MD

Courtesy of Dr. Martin Crowe, Consultant Radiologist The Queen Elizabeth Hospital, Norfolk, UK.

9 of 42


Pitfalls in the Human Visual System *Can we trust our eyes?*

Orientation is Important

Introduction

- Parallel Lines
- Orientation is Important
- Shapes that aren't there
- Motion that's not there
- Smooth Motion
- Perspective
- Colors
- Length

I was taught a trained observer could read a chest radiograph upside down... Perhaps I can convince you otherwise...



www.schreibman.info © 2015 Ken L. Schreibman, PhD/MD

10 of 42

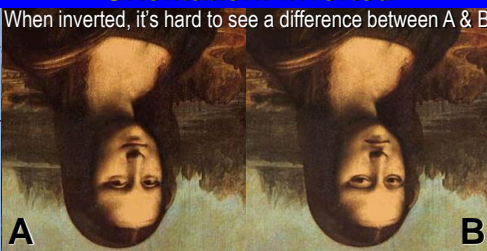
Pitfalls in the Human Visual System *Can we trust our eyes?*

Orientation: Inverted

Introduction

- Parallel Lines
- Orientation is Important
- Shapes that aren't there
- Motion that's not there
- Smooth Motion
- Perspective
- Colors
- Length

When inverted, it's hard to see a difference between A & B



www.schreibman.info © 2015 Ken L. Schreibman, PhD/MD

exploratorium.edu

11 of 42

Pitfalls in the Human Visual System *Can we trust our eyes?*

Orientation: Side-by-Side

Introduction

- Parallel Lines
- Orientation is Important
- Shapes that aren't there
- Motion that's not there
- Smooth Motion
- Perspective
- Colors
- Length

To me this means our eyes are sensitive to how we orient our images side-by-side. On our PACS I always use the same side-by-side arrangement:

- > PA vs Lat Views
- > T1 vs T2 series



www.schreibman.info © 2015 Ken L. Schreibman, PhD/MD

Forbidden City, Beijing, China

12 of 42

Pitfalls in the Human Visual System

Pitfalls in the Human Visual System *Can we trust our eyes?*

Shapes that aren't there

- Introduction
- Parallel Lines
- Orientation is Important
- Shapes that aren't there
- Motion that's not there
- Smooth Motion
- Perspective
- Colors
- Length

Human brain is hardwired to see shapes

- > **Pareidolia**: random images perceived as significant*
- > **Faces**

Man in Moon Face in Mars Old Man of the Mountain

White Mountains New Hampshire pre 2003

www.schreibman.info © 2015 Ken L. Schreibman, PhD/MD 13 of 42

Pitfalls in the Human Visual System *Can we trust our eyes?*

Shapes that aren't there

- Introduction
- Parallel Lines
- Orientation is Important
- Shapes that aren't there
- Motion that's not there
- Smooth Motion
- Perspective
- Colors
- Length

Cow in the Milk Bottle

Wisconsin Dells

www.schreibman.info © 2015 Ken L. Schreibman, PhD/MD 14 of 42

Pitfalls in the Human Visual System *Can we trust our eyes?*

There are no white circles here

- Introduction
- Parallel Lines
- Orientation is Important
- Shapes that aren't there
- Motion that's not there
- Smooth Motion
- Perspective
- Colors
- Length

Rows of black crosses

www.schreibman.info © 2015 Ken L. Schreibman, PhD/MD 15 of 42

Pitfalls in the Human Visual System *Can we trust our eyes?*

There is no triangle here

- Introduction
- Parallel Lines
- Orientation is Important
- Shapes that aren't there
- Motion that's not there
- Smooth Motion
- Perspective
- Colors
- Length

Once we see the triangle, it's hard to *not* see the triangle!

We start with 3 circles (pizzas)
Take a slice out of each...
Rotate them...
We now see a triangle...
...that's not really there
Even if we pull the circles away from each other...
We still see the triangle that's not there!

www.schreibman.info © 2015 Ken L. Schreibman, PhD/MD 16 of 42

Pitfalls in the Human Visual System *Can we trust our eyes?*

There are no spirals here

- Introduction
- Parallel Lines
- Orientation is Important
- Shapes that aren't there
- Motion that's not there
- Smooth Motion
- Perspective
- Colors
- Length

ritsumei.ac.jp wikipedia.org

www.schreibman.info © 2015 Ken L. Schreibman, PhD/MD 17 of 42

Pitfalls in the Human Visual System *Can we trust our eyes?*

Motion that's not there...

- Introduction
- Parallel Lines
- Orientation is Important
- Shapes that aren't there
- Motion that's not there
- Smooth Motion
- Perspective
- Colors
- Length

ritsumei.ac.jp

www.schreibman.info © 2015 Ken L. Schreibman, PhD/MD 18 of 42

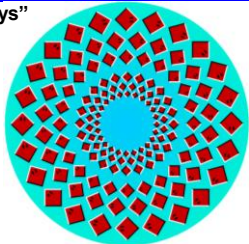
Pitfalls in the Human Visual System

Pitfalls in the Human Visual System *Can we trust our eyes?*

Motion that's not there...

- Introduction
- Parallel Lines
- Orientation is Important
- Shapes that aren't there
- Motion that's not there
- Smooth Motion
- Perspective
- Colors ①
- Length

"Rotating rays"



www.schreibman.info
© 2015 Ken L. Schreibman, PhD/MD

ritsumei.ac.jp

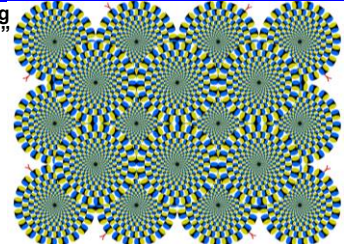
19 of 42

Pitfalls in the Human Visual System *Can we trust our eyes?*

Motion that's not there...

- Introduction
- Parallel Lines
- Orientation is Important
- Shapes that aren't there
- Motion that's not there
- Smooth Motion
- Perspective
- Colors ①
- Length

"Rotating Snakes"



www.schreibman.info
© 2015 Ken L. Schreibman, PhD/MD

ritsumei.ac.jp

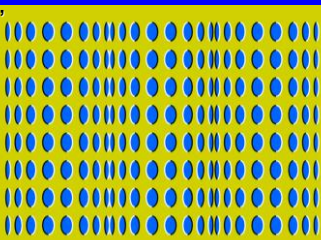
20 of 42

Pitfalls in the Human Visual System *Can we trust our eyes?*

Motion that's not there...

- Introduction
- Parallel Lines
- Orientation is Important
- Shapes that aren't there
- Motion that's not there
- Smooth Motion
- Perspective
- Colors ①
- Length

"Rollers"



www.schreibman.info
© 2015 Ken L. Schreibman, PhD/MD

ritsumei.ac.jp

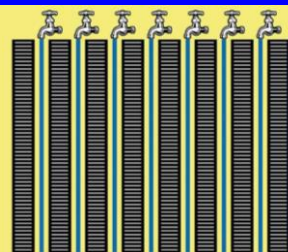
21 of 42

Pitfalls in the Human Visual System *Can we trust our eyes?*

Motion that's not there...

- Introduction
- Parallel Lines
- Orientation is Important
- Shapes that aren't there
- Motion that's not there
- Smooth Motion
- Perspective
- Colors ①
- Length

"Pouring Water"



www.schreibman.info
© 2015 Ken L. Schreibman, PhD/MD

mollusions.com

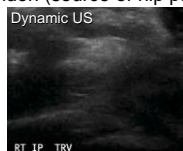
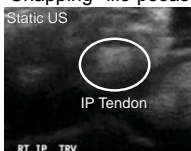
22 of 42

Pitfalls in the Human Visual System *Can we trust our eyes?*

Smooth Motion

- Introduction
- Parallel Lines
- Orientation is Important
- Shapes that aren't there
- Motion that's not there
- Smooth Motion
- Perspective
- Colors ①
- Length

Traditionally, radiologists looked at static pictures
 Ultrasound allows for dynamic examinations
 > US is being used increasingly in MSK
 ✓ "Snapping" Ilio-psoas tendon (source of hip pain)



www.schreibman.info
© 2015 Ken L. Schreibman, PhD/MD

23 of 42

Pitfalls in the Human Visual System *Can we trust our eyes?*

Smooth Motion: Linear

- Introduction
- Parallel Lines
- Orientation is Important
- Shapes that aren't there
- Motion that's not there
- Smooth Motion
- Perspective
- Colors ①
- Length



www.schreibman.info
© 2015 Ken L. Schreibman, PhD/MD

Black&White squares moving same speed in smooth linear motion back&forth

24 of 42

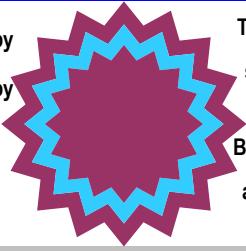
Pitfalls in the Human Visual System

Pitfalls in the Human Visual System *Can we trust our eyes?*

Smooth Motion: Rotational

Introduction
Parallel Lines
Orientation is Important
Shapes that aren't there
Motion that's not there
Smooth Motion
Perspective
Colors ①
Length

Purple star... surrounded by a blue star... surrounded by a purple star



The blue star is rotating smoothly...

Rotate the blue star... But it appears to rotate in a cog-wheel fashion!

www.schreibman.info
© 2015 Ken L. Schreibman, PhD/MD 25 of 42

Pitfalls in the Human Visual System *Can we trust our eyes?*

Motion Induced Blindness

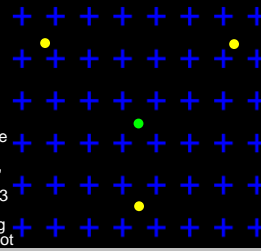
Introduction
Parallel Lines
Orientation is Important
Shapes that aren't there
Motion that's not there
Smooth Motion
Perspective
Colors ①
Length

Focus your attention on the blinking green dot

We add in 3 yellow dots in the periphery

Even when we add in many blue crosses, you can still easily see all 3 yellow dots while focusing on the green dot

But if we make the crosses move... and you stay focused on the green dot... Soon, 1, 2, or even all 3 yellow dots will briefly disappear!




www.schreibman.info
© 2015 Ken L. Schreibman, PhD/MD 26 of 42

Pitfalls in the Human Visual System *Can we trust our eyes?*

Importance of Multiple Views

Introduction
Parallel Lines
Orientation is Important
Shapes that aren't there
Motion that's not there
Smooth Motion
Perspective
Colors ①
Length

We need to put the two views together in our own brains to understand what's in front and what's behind.



This is a made up example...

www.schreibman.info
© 2015 Ken L. Schreibman, PhD/MD 27 of 42

Pitfalls in the Human Visual System *Can we trust our eyes?*

For joints need three views

Introduction
Parallel Lines
Orientation is Important
Shapes that aren't there
Motion that's not there
Smooth Motion
Perspective
Colors ①
Length

PA view thumb Oblique view Lateral view

...negative ...negative **DISLOCATED!**

This is a real example

www.schreibman.info
© 2015 Ken L. Schreibman, PhD/MD 28 of 42

Pitfalls in the Human Visual System *Can we trust our eyes?*

Forced Perspective

Introduction
Parallel Lines
Orientation is Important
Shapes that aren't there
Motion that's not there
Smooth Motion
Perspective
Colors ①
Length



Marty is *not* taller than the Sears Tower

Marty age 8

www.schreibman.info
© 2015 Ken L. Schreibman, PhD/MD 29 of 42

Pitfalls in the Human Visual System *Can we trust our eyes?*

Forced Perspective: Deception

Introduction
Parallel Lines
Orientation is Important
Shapes that aren't there
Motion that's not there
Smooth Motion
Perspective
Colors ①
Length



Picture on real estate site > HUGE pool!

www.schreibman.info epicfail.com
© 2015 Ken L. Schreibman, PhD/MD 30 of 42

Pitfalls in the Human Visual System

Pitfalls in the Human Visual System *Can we trust our eyes?*

Forced Perspective: Static

Introduction
Parallel Lines
Orientation is Important
Shapes that aren't there
Motion that's not there
Smooth Motion
● Perspective
Colors ①
Length

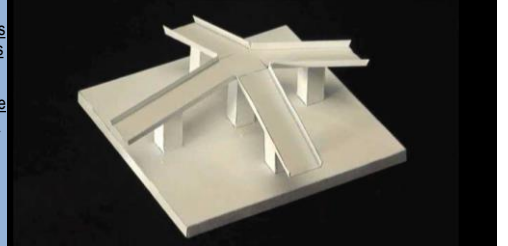


www.schreibman.info games.yahoo.com © 2015 Ken L. Schreibman, PhD/MD 31 of 42

Pitfalls in the Human Visual System *Can we trust our eyes?*

Forced Perspective: Dynamic

Introduction
Parallel Lines
Orientation is Important
Shapes that aren't there
Motion that's not there
Smooth Motion
● Perspective
Colors ①
Length

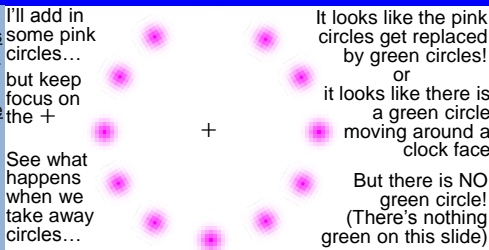


www.schreibman.info illusioncontest.neuralscorrelate.com © 2015 Ken L. Schreibman, PhD/MD 2010 Best Illusion of the Year Winner 32 of 42

Pitfalls in the Human Visual System *Can we trust our eyes?*

Colors that aren't there

Introduction
Parallel Lines
Orientation is Important
Shapes that aren't there
Motion that's not there
Smooth Motion
● Perspective
Colors ①
Length

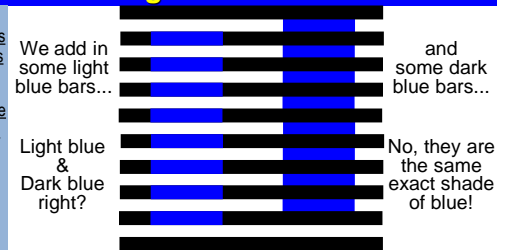


www.schreibman.info Focus your attention of the + © 2015 Ken L. Schreibman, PhD/MD 33 of 42

Pitfalls in the Human Visual System *Can we trust our eyes?*

Light vs Dark: Blue

Introduction
Parallel Lines
Orientation is Important
Shapes that aren't there
Motion that's not there
Smooth Motion
● Perspective
Colors ①
Length

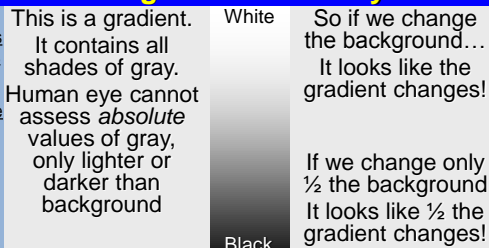


www.schreibman.info We start with black&white bars © 2015 Ken L. Schreibman, PhD/MD 34 of 42

Pitfalls in the Human Visual System *Can we trust our eyes?*

Light vs Dark: Gray

Introduction
Parallel Lines
Orientation is Important
Shapes that aren't there
Motion that's not there
Smooth Motion
● Perspective
Colors ①
Length

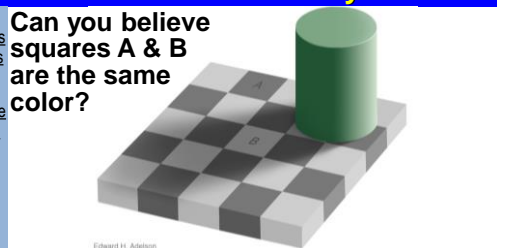


www.schreibman.info © 2015 Ken L. Schreibman, PhD/MD 35 of 42

Pitfalls in the Human Visual System *Can we trust our eyes?*

Shadows: Gray

Introduction
Parallel Lines
Orientation is Important
Shapes that aren't there
Motion that's not there
Smooth Motion
● Perspective
Colors ①
Length



www.schreibman.info persci.mit.edu © 2015 Ken L. Schreibman, PhD/MD 36 of 42

Pitfalls in the Human Visual System

Pitfalls in the Human Visual System *Can we trust our eyes?*

Shadows: Color

Introduction

Parallel Lines

Orientation is Important

Shapes that aren't there

Motion that's not there

Smooth Motion

Perspective

Colors ①

Length

What color is this tile?

What color is this tile?

R. Beau Lotto
www.spiegel.de

www.schreibman.info
© 2015 Ken L. Schreibman, PhD/MD

Pitfalls in the Human Visual System *Can we trust our eyes?*

Colors: #TheDress

Introduction

Parallel Lines

Orientation is Important

Shapes that aren't there

Motion that's not there

Smooth Motion

Perspective

Colors ①

Length

Kim Kardashian West @ckardashian "What color is that dress? I see white & gold. Kanye sees black & blue, who is color blind?"

Brightness: -40% Contrast: +40%

Original JPEG

Brightness: +40% Contrast: +40%

www.schreibman.info
© 2015 Ken L. Schreibman, PhD/MD

Pitfalls in the Human Visual System *Can we trust our eyes?*

Our Eyes are Poor at Judging Length

Introduction

Parallel Lines

Orientation is Important

Shapes that aren't there

Motion that's not there

Smooth Motion

Perspective

Colors ①

Length

We've all seen questions like this:

Which horizontal line is longer?

Same length

R. Beau Lotto
www.spiegel.de

www.schreibman.info
© 2015 Ken L. Schreibman, PhD/MD

Pitfalls in the Human Visual System *Can we trust our eyes?*

Our Eyes are Poor at Judging Length

Introduction

Parallel Lines

Orientation is Important

Shapes that aren't there

Motion that's not there

Smooth Motion

Perspective

Colors ①

Length

Two tables of very different shape
Green: Rectangular Red: Square

R. Beau Lotto
www.spiegel.de

www.schreibman.info
© 2015 Ken L. Schreibman, PhD/MD

Pitfalls in the Human Visual System *Can we trust our eyes?*

What have we learned?

Introduction

Parallel Lines

Orientation is Important

Shapes that aren't there

Motion that's not there

Smooth Motion

Perspective

Colors ①

Length

We are not good at judging length

- > Need to make actual measurements

We are not good at judging gray levels

- > Need to measure Hounsfield Units

How we orient images matters

- > Need to hang things the same way every time

Complex backgrounds can fool you

- > All radiology images have complex backgrounds...

www.schreibman.info
© 2015 Ken L. Schreibman, PhD/MD

Pitfalls in the Human Visual System *Can we trust our eyes?*

Thank you!

Introduction

Parallel Lines

Orientation is Important

Shapes that aren't there

Motion that's not there

Smooth Motion

Perspective

Colors ①

Length

media.photobucket.com

www.schreibman.info
© 2015 Ken L. Schreibman, PhD/MD