

***Call rad in A.M. to have them review case. That way coil selection and pathology can be reviewed**

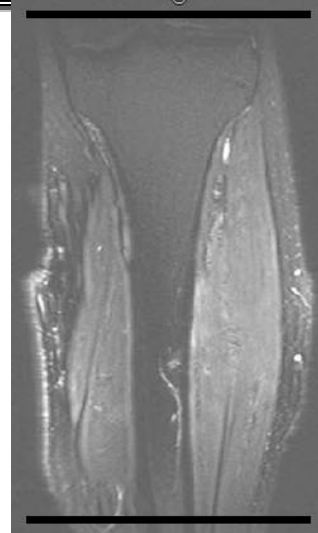
3T ONLY 8 Channel Cardiac Coil

1. 3 PI loc
2. Ax T1
3. Ax T2 dk fat (Separate into upper and lower half)
4. Sag T1
5. Sag T2 dk fat
6. Cor T2 dk fat
7. Cor T1

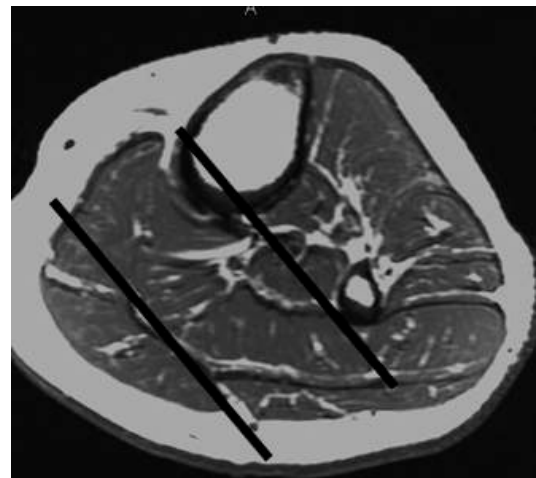
Give .1mmol/kg Multihance

Low eGFR inpatient dose: No Change:

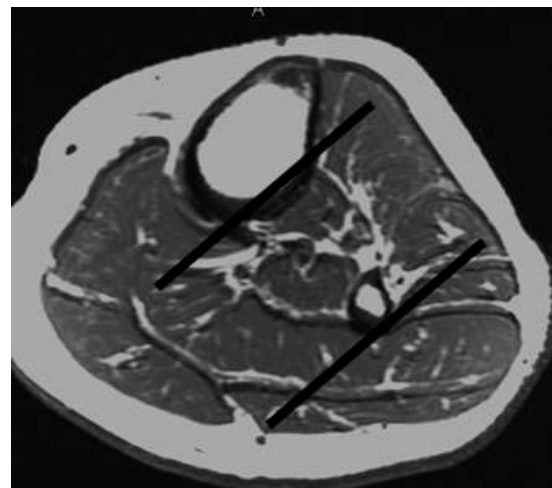
+c 3 planes T1 dk fat



Axial Plane



Coronal Plane



Sagittal Plane

